

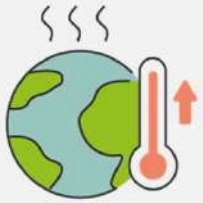
THERMAL LINE

Innovative technology
for a more efficient home



GLOBAL WARMING

Global warming consists of the increase in the temperature of the earth, which is reflected in the oceans and the atmosphere mainly caused by the emission of greenhouse gases emitted by human activity.



TEMPERATURE RISE

Over the past 100 years, the global average temperature has risen 0.76 °C and eleven of the twelve hottest years since 1850 are concentrated between 1995 and 2006. In Spain, that warming has been 1.5 °C. In the Arctic, up to 5°C.



HIGHER ENERGY CONSUMPTION

According to the Practical Energy Guide of the Institute for Energy Diversification and Saving (IDAE), for every degree that we increase the temperature, energy consumption increases by approximately 7%.



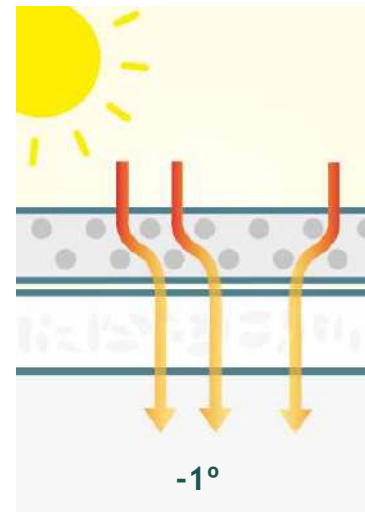
WHAT IS REFLECTIVE THERMAL COATING?

It is a family of products with high energy efficiency, capable of reflecting 93% of solar radiation, with an SRI 121, designed for use in different construction phases. Its patented composition gives the products a very low energy conductivity, thus improving the efficiency and insulation of the treated structures.

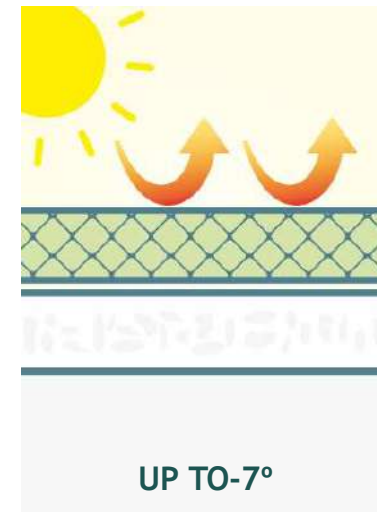
Throughout the family we use a new patented technology, in joint development with the CSIC (Centro Superior de Investigaciones Científicas de España - Spanish Higher Centre of Scientific Research).

This technology allows us to radically change the concept of energy efficiency in resinous products. The previous technology, based on glass or ceramic microspheres, has limited effectiveness due to its product concept.

TECHNOLOGY
MICRO-SPHERES



TECHNOLOGY
REFLECTIVE THERMAL



THERMAL
LINE

WALL

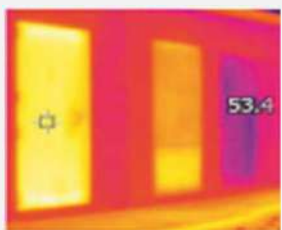
INTERIOR

We achieve a structure in the form of blocks, where the union between them is perfect, thus avoiding any point of energy transfer.

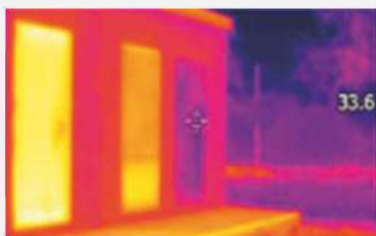
TECHNICAL TESTS

TechSol's Thermal Line has been subjected to different technical tests in which they have verified and checked its efficiency in reducing the interior temperature of homes, thus reducing energy consumption.

Theory tells us that thickness is a variable to take into account in thermal efficiency, but thanks to patented technology from our Thermal Line, we will achieve optimal energy efficiency in our projects.



Surface temperature test on untreated



Surface temperature test on support with patented technology products



TechSol's Thermal Line provides thermal insulation capable of improving 7° of internal temperature (each degree that the interior temperature of a home is reduced means an energy saving of 7%)

BENEFITS



REDUCTION OF THERMAL LOAD

By reflecting a large portion of solar radiation, the coating helps decrease the amount of heat absorbed by painted surfaces. This has a significant impact on reducing the thermal load on buildings and structures, which in turn reduces the need for cooling systems and the associated energy consumption.



ENERGY SAVING

By reducing the thermal load and the need for cooling systems, the coating contributes to a lower energy consumption in buildings and structures. This translates into less use of natural resources and a decrease in greenhouse gas emissions, which is beneficial for the environment.



IMPROVED INTERIOR COMFORT

By reducing heat absorbed by surfaces, the reflective coating helps maintain cooler temperatures inside buildings, improving occupant comfort. This can be especially important in areas with warm, sunny climates.



SURFACE PROTECTION

In addition to its reflective ability, this coating also offers protective properties that help prevent the deterioration of painted surfaces. This includes protection against ultraviolet (UV) rays and premature ageing caused by sun exposure.

An easy, innovative and economical solution for a more efficient home

- ✓ Reduces the thermal load on the home
- ✓ Improves interior comfort
- ✓ Energy savings
- ✓ Easy to apply



MATTE PAINT PRO THERMAL

Matte finish plastic paint, with high coverage (98,19) and maximum whiteness (96,32) measured with spectrophotometer, based on top quality styrene acrylic resins, pigments, fillers and additives.

Formulated with new patented technology (patent number P202230953), which provides thermal insulation capable of improving the internal temperature (each degree that the interior temperature of a home is reduced means an energy saving of 7%), maximizing home comfort and energy saving.

It works indoors, improving the efficiency of heating or heat pump.



Performance:
250/300 gr / m²

Finishing:
Plain matte white

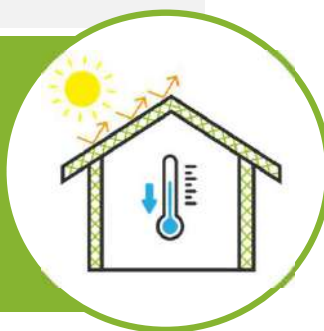
Container:
Plastic container
of 4 and 15 litres

THERMAL PAINT WATERPROOF

Professional outdoor coating, based on siloxanes and acrylic resin in aqueous emulsion. Matte finish and high strength, specially prepared for application on both old and new construction surfaces. High coverage (99,32) and maximum whiteness (97,21) measured with spectrophotometer.

Formulated with new patented technology (patent number P202230953), which provides thermal insulation capable of improving the internal temperature (each degree that the interior temperature of a home is reduced means an energy saving of 7%), maximizing home comfort and energy saving.

It works outdoors, creating an insulating barrier capable of minimizing the entry of heat to the structure of the house. Due to its formulation, we improve the useful life of the coating outdoors.



Performance:
250/300 gr / m²

Finishing:
Plain matte white

Container:
Plastic container
of 4 and 15 litres

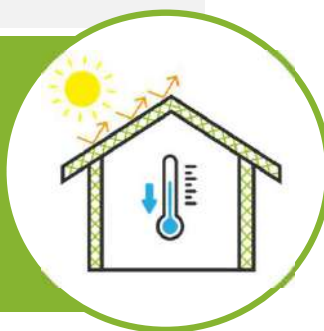
PROOF W THERMAL

THERMAL WATERPROOF ACRYLIC MEMBRANE

Based on acrylic emulsions without organic solvents and free of bituminous products. Good elasticity, forms a film above 5°C. Specially designed for vertical surfaces, high coverage and wear resistance.

Formulated with new patented technology (patent number P202230953), which provides thermal insulation capable of improving the internal temperature (each degree that the interior temperature of a home is reduced means an energy saving of 7%), maximizing home comfort and energy saving.

It works outdoors, creating an insulating barrier capable of minimizing the entry of heat to the structure of the house. Due to its formulation, we improve the useful life of the coating outdoors.



Performance:
500 gr / m²

Finishing:
Semi shine

Container:
Container 18 Kg

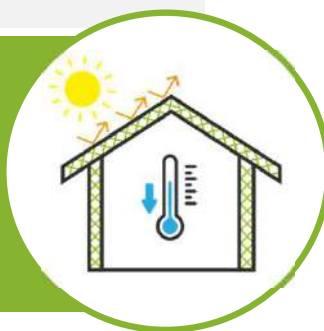
PROOF W PRO THERMAL

THERMAL WATERPROOF ACRYLIC MEMBRANE

Based on acrylic emulsions without organic solvents and free of bituminous products. Good elasticity, forms a film above 5°C. Specially designed for horizontal surfaces, high wear resistance.

Formulated with new patented technology (patent number P202230953), which provides thermal insulation capable of improving the internal temperature (each degree that the interior temperature of a home is reduced means an energy saving of 7%), maximising home comfort and energy saving.

It works outdoors, creating an insulating barrier capable of minimizing the entry of heat to the structure of the house. Due to its formulation, we improve the useful life of the coating outdoors.



Performance:
 $\pm 1,5-2 \text{ kg / m}^2$

Finishing:
Semi shine

Container:
Container 18 Kg



www.techsol.es / techsol@techsol.es